



# Shower Chair with Arms & Back U-Shaped Hygienic Cut-out User Guide

ITEM: #1011



## Important Safety Notice

Beware of slipping; avoid falling. Do not stand or squat on the chair.

Do not leave unattended while using the chair.

Max Weight Capacity of **300 lbs**

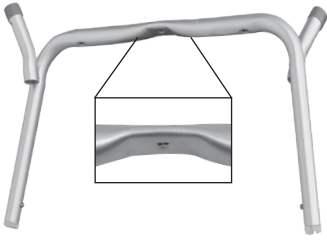
Read this user guide before operating or using your NOKA Shower Chair.

User guide and video available online at [www.nokamedical.com](http://www.nokamedical.com)

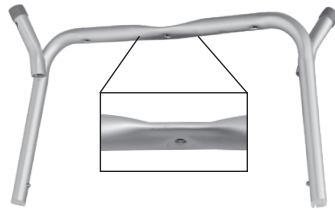
# INSTRUCTIONS

READ INSTRUCTIONS CAREFULLY BEFORE INSTALLING.

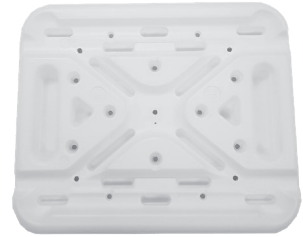
## Components



Frame Tubing (①)



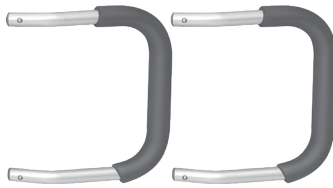
Frame Tubing (②)



Seat Panel (③)



Backrest Panel (④)



Armrest (⑤)



Backrest Support  
Tubing (⑥)



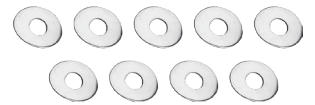
Adjustable Leg (⑦)



Short Wing  
Knob Screws (⑧)



Long Wing  
Knob Screws (⑨)



Wave Washers (⑩)

- Lay Seat Panel (③) on a flat surface and mount Frame Tubings (① & ②) across the seat, securing in place with the Short Wing Knob Screws (⑧) and Wave Washers (⑩) in the centre of the seat.



x 1



- ▶ Fasten Backrest Support Tubing (⑥) in place across Frame Tubing (① & ②), screw in place in all 4 corners (through both tubes) with the Long Wing Knob Screws (⑨) and Wave Washers (⑩).

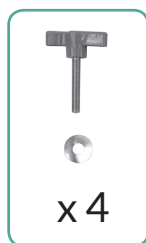


- ▶ Fasten the Adjustable Leg (⑦) onto Frame Tubings (① & ②).

**NOTE:** 1 x leg extension tube has extra holes on it to handle uneven surfaces, please ensure all 4 x legs are at the same height prior to use.



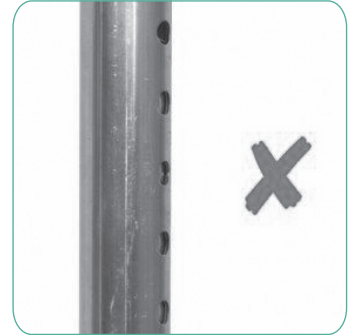
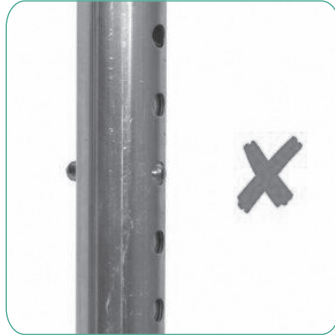
- ▶ Fasten Backrest Panel (④) to Backrest Support Tubing (⑥), fasten in place with 4 x Short Wing Knob Screws (⑧).



- ▶ Check and ensure all Wing Knob Screws (both short and long) are fastened in place, armrest pins are secured and locked in place and that all 4 x legs are at the same height, your NOKA Shower Chair is now ready for use.

## HEIGHT ADJUSTMENT

- ▶ Before use, adjust height of each leg to your specific needs, making sure all legs are at the same height. When desired height is reached, lock legs into place by aligning buttons into proper holes.
- ▶ Be sure legs are locked into place by pushing down on or by pulling legs.



## WARNING

- ▶ Make certain that the height adjusting brass pushpins fully protrude through the same respective hole of each leg extension. This will ensure that the leg extensions are securely locked in position and an even height is achieved.
  - ▶ Ensure ALL screws, nuts and/or bolts are tightened.
  - ▶ Check the rubber tips on the leg extensions for rips, wear or if they are missing. Immediately replace any or all if any of these imperfections exist.
  - ▶ All four leg extensions with rubber tips MUST touch the floor simultaneously.
  - ▶ When used in a tub, make certain the rubber tips are not touching the sides of the tub wall.
- ⚠ DO NOT stand on chair.

## LIMITED LIFETIME WARRANTY

NOKA warrants the original purchaser of this product against any defects in material or workmanship under normal use. The warranty does not extend to any subsequent purchaser or owner, The warranty is void upon any sale or transfer of ownership or use by other person. NOKA warrants its products for the period commencing upon the date of purchase and continuing for the following specified period of time after that date:

**Metal Frame: Limited Lifetime Warranty**

**Non-Metal/Metal parts: One year Limited Warranty**

This warranty does not cover failures due to user negligence, misuse of the product, improper operations and unauthorized modifications. The warranty does not extend to the normal wear and tear of the non-durable components, such as rubber accessories, casters, and grips, which are subject to normal wear and need periodic replacement.

For warranty service, please contact the dealer from whom you purchased your product. In the event of a defect covered by this warranty, we will, at our option, repair or replace the device. This warranty does not include any labor or shipping charges incurred in replacement part installation or repair of product.

DO NOT return any products to our office without prior consent.

The foregoing warranty is exclusive and in lieu of other express warranties, if any, including the implied warranties of merchantability and fitness of a particular purpose. The remedy for any violation of the implied warranty shall be limited to repair or replacement of the defective product pursuant to the terms contained herein. NOKA shall not be liable for any consequential or incidental damages whatsoever.

[WWW.NOKAMEDICAL.COM](http://WWW.NOKAMEDICAL.COM)